

CYLINDERS

**STEEL
&
ALUMINUM**



VALVES



**BOOTS
&
BANDS**



**LEAD
WEIGHT**

2025



Catalog Table of Contents

<u>Page</u>	<u>Item/Product</u>
2	<i>Terms & Conditions</i>
3	<i>Product Introduction</i>
4	<i>Steel Cylinders – Painted</i>
5	<i>Rebreather Cylinders and Valves</i>
6	<i>Scuba Tank Valves</i>
7	<i>Manifold valve and Parts</i>
8	<i>H Valves and Kits</i>
9	<i>Tank Valve Parts list and Exploded View</i>
10	<i>Rebreather Valve Parts list and Exploded View</i>
11	<i>Lead Weight Soft</i>
12	<i>Lead Weight Hard</i>
13	<i>Tank Boots and Tank Band Kits</i>
14	<i>Aluminum Scuba Cylinders</i>
15	<i>ISO Steel Cascade Cylinders</i>
16	<i>Medical O2 Cylinders for Emergency Kits</i>
17	<i>Sales Representative Contact List</i>



6255 Kilby Road
Harrison, Ohio 45030
Phone: (877) 434-8325
Fax: (513) 367-0803

TERMS AND CONDITIONS

Terms and Conditions

- > All prices are subject to change without notice
- > Orders are accepted with prices prevailing at time of shipment
- > **Any and all orders Less than \$100 will be charged a \$10 Small order process fee!**
- > Possession of a Price List does not constitute a Binding offer to sell.
- > Blue Steel Scuba/Kaplan Scuba reserves the right to accept or reject any and all orders.

Payment Terms:

- > Payment Terms are Credit Card or Cash in Advance.
- > COD or Net 30 Terms are available and are subject to credit review and approval prior to any terms being extended.
- > A **\$30** Service charge will be assessed on all "NSF" or returned checks for any reason.
- > Blue Steel Scuba/Kaplan Scuba reserves the right to not ship to any account past due.

Freight:

- > Shipments are FOB Warehouse. Delivery to a carrier constitutes delivery to a purchaser.
- > Blue Steel Scuba/Kaplan Scuba **will not "Drop Ship"** products to other locations.
- > Any shipment received in damaged condition must have the BOL marked "Received Damaged" before signing BOL as received. Failure to do so will void any and all claims for missing or damaged product.
- > All customer orders must specify delivery instructions including operating Hours and any Days closed! any re-delivery fee due to consignee not being available will be at buyers expense!
- > **When any order meets a "Freight Paid" level, Seller reserves the right to select carrier and will only pay for delivery to dock or front of building by carrier. Any additional requirements such as lift gate, Box Truck, Residential delivery, Inside delivery etc. will be billed to customer at the carriers established rate for these services.**

Returns:

- > All returns require a Return Authorization (RA) PRIOR to returning any merchandise.
- > All returns must be made within 30 days of receipt of merchandise/RA
- > Any authorized return must be made freight prepaid.
- > Return Authorization number must be clearly marked on outside of all returns.
- > Unauthorized returns or customer-refused shipments will be charged a 15% restocking charge.

Warranty - The following warranty applies to Blue Steel Scuba Steel cylinders:

- > All Steel Scuba Cylinders have a five (5) year Limited Warranty for Material and Workmanship.
- > Warranty only applies to normal Scuba Diving use of product in water with proper care and maintenance.
- > Warranty does not include any claims resulting from damage caused by impact of foreign object hitting tank and damaging surface finish applied by factory and/or fittings (valves, boots, cylinder bands) or any other ancillary equipment attached to cylinders.
- > All cylinder valves, manifolds and other products sold by Blue Steel Scuba have a one (1) year Warranty for Material and Workmanship from date of purchase.
- > Blue Steel Scuba reserves the right to make all final decisions regarding warranty claims.

Steel Cylinder Hydro Dates

Blue Steel Scuba makes every effort to ship the newest possible hydro date on all our cylinders. However due to high manufacturing quantities on various models, fluctuating sales volumes due to market conditions, hydro inventory will vary. Cylinders shipped within 18 months of manufacture date are considered "Current Hydro".



The Blue Steel name is synonymous with Faber when it comes to steel scuba cylinders. Our Tripple coated painted finish on all size cylinders, gives you the quality and performance you demand and appreciate in a steel scuba cylinder. With the widest range of sizes in the market today Faber cylinders offer you the needed volume and flexibility to maximize your bottom time.

With over 40 years of cylinder manufacturing experience, Blue Steel / Faber cylinders make your diving experience a safe and enjoyable one. From the highest quality, deep drawn Chromium Molybdenum steel, to the exclusive Phosphatized-cleaned internal surface, you get the best from Blue Steel/Faber.

It's not just a tank It's a FABER

FEATURES:

- Sizes from 15 CF up to 149 CF (2 Liter to 19 Liter)
- Triple Coat Painted Hot Zinc Sprayed Finish
- Fill pressures from 2640 to 3442 PSI.
- Excellent buoyancy characteristics
- Cylinders Oxygen cleaned for Nitrox use.
- DOT 3AA 2400 PSI and DOT-SP 13488 3442 PSI
- TC approved.

Blue Steel Scuba is the exclusive distributor of Faber steel Rebreather cylinders and DOT 2400 LP Diving Cylinders to both the OEM and wholesale market. We are the premier supplier of High Pressure 3442 PSI DOT Exempt Steel Cylinders. Blue Steel Scuba, your first choice for Faber Steel Cylinders.

Why Faber's Steel Cylinders are the best

Faber Steel vs Aluminium Cylinders

- 1 weigh the same if not less
- 2 have superior buoyancy performance
- 3 are not affected by SLC
- 4 will last forever with proper maintenance

Faber Steel vs other steel cylinders

- 1 are the lightest on the market
- 2 have a novel design which ensures a uniform weight distribution
- 3 have a unique coating against corrosion

BLUE STEEL

www.bluesteelscuba.com
877-434-8325

Faber
CYLINDERS

Since 1972, the world leader in the production of Steel SCUBA cylinders

Steel Cylinder Hydro Dates

Blue Steel Scuba makes every effort to ship the newest possible hydro date on all our cylinders. However, due to high manufacturing quantities on various models, fluctuating sales volumes due to market conditions, hydro inventory will vary. Cylinders shipped within 18 months of manufacture date are considered "current hydro".



Faber DOT 3AA and DOT-SP Steel Cylinders

DOT 3AA 2400 +10% PSI Faber Steel Cylinders
(Overfill Is Not Permitted)

Item #	Liters	CF	Fill Pressure-psi
L50SDVB	7.8	50	2640
L85SDVB	13	85	2640
L95SDVB	15	95	2640
L108SDVB	17	108	2640



FX Series DOT-SP (Exempt) 3442 PSI Faber Painted Steel Cylinders
(Overfill Is Not Permitted)

Item #	Liters	CF	Fill Pressure-psi
FX80SDVB	10.2	80	3442
FX100SDVB	12.9	100	3442
FX117SDVB	15	117	3442
FX120SDVB	15.3	120	3442
FX133SDVB	17	133	3442
FX149SDVB	19.0	149	3442



ALL ABOVE CYLINDERS WITH VALVES ARE NITROX READY

**NOTE: All cylinders supplied with 10120 RH DIN/Yoke combination valve.
 Blue Steel valve with Black Vindicator Valve (Air only) are available if requested.**



REBREATHER CYLINDERS and INLINE VALVES

STEEL REBREATHER CYLINDERS

Part #	Description
FX15DV	15 CF (2L) 3442 PSI, White with 10120 RH Valve
FX15LHDV	15 CF (2L) 3442 PSI, White with 10108 LH Valve
FX15BKDV	15 CF (2L) 3442 PSI, Black with 10120 RH Valve
FX15BKLHDV	15 CF (2L) 3442 PSI, Black with 10108 LH Valve
FX15RVGH	15 CF (2L) 3442 PSI, White W/Inline 18040GH (Green)
FX15RVBH	15 CF (2L) 3442 PSI, White W/Inline 18040BH (Black)
FX15BKRVGH	15 CF (2L) 3442 PSI, Black W/Inline 18040GH (Green)
FX15BKRVBH	15 CF (2L) 3442 PSI, Black W/Inline 18040BH (Black)
FX23DV	23 CF (3L) 3442 PSI, White with 10120 RH Valve
FX23LHDV	23 CF (3L) 3442 PSI, White with 10108 LH Valve
FX23BKDV	23 CF (3L) 3442 PSI, Black with 10120 RH Valve
FX23BKLHDV	23 CF (3L) 3442 PSI, Black with 10108 LH Valve
FX23RVGH	23 CF (3L) 3442 PSI, White W/Inline 18040GH (Green)
FX23RVBH	23 CF (3L) 3442 PSI, White W/Inline 18040BH (Black)
FX23BKRVGH	23 CF (3L) 3442 PSI, Black W/Inline 18040GH (Green)
FX23BKRVBH	23 CF (3L) 3442 PSI, Black W/Inline 18040BH (Black)
L27BKDV	27 CF (4L) 2400 PSI, Black with 10111 RH Valve
L27BKLHDV	27 CF (4L) 2400 PSI, Black with 10107 LH Valve
FX40BKDV	40 CF (5L) 3442 PSI, Black with 10120 RH Valve



18040 INLINE SERIES REBREATHER VALVE

Part #	Description
18040-BH	Rebreather Valve with 200 Bar Din outlet Inlet 3/4-14 NPSM, Black Handwheel
18040-GH	Rebreather Valve with 200 Bar Din outlet Inlet 3/4-14 NPSM, Green Handwheel



FEATURES

- 200 Bar DIN Outlet
- Bump Guard
- Shrouded Safety Device
- Handwheel: Black or Green
- 3/4" NPSM Inlet Thread
- Burst Disc Service Pressure 3442 PSI
- Burst Disc Rupture Pressure 5250 PSI
- Cleaned for Oxygen Service

Cylinders and Valves for all your Rebreather needs.....Blue Steel Scuba.



SCUBA TANK VALVES

Standard Tank Valves

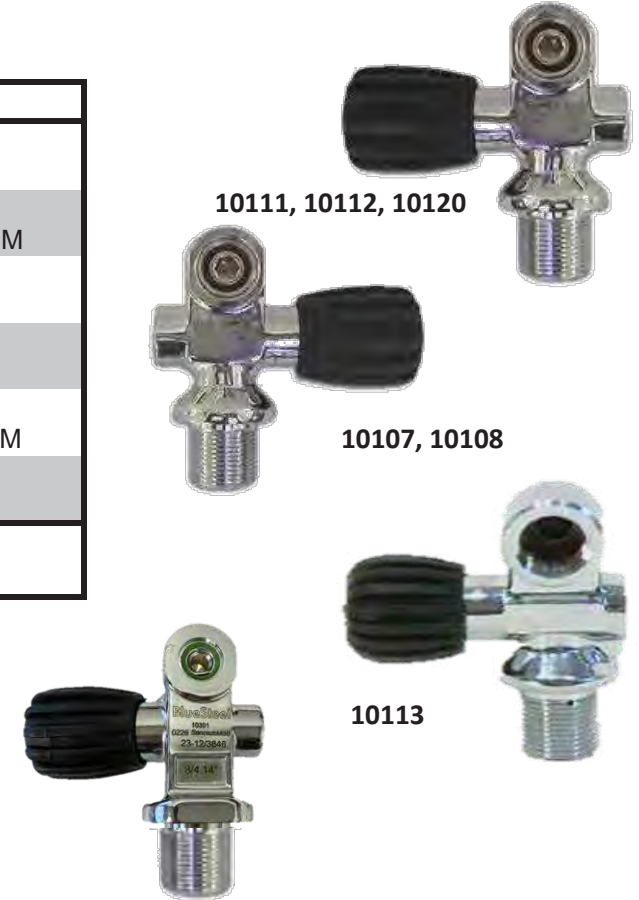
Part #	Description
10107	LH Tank Valve with DIN/K outlet, 200/232 BAR For 2400 psi service pressure, Inlet 3/4" NPSM
10108	LH Tank Valve with DIN/K outlet, 200/232 BAR For 3180/3443 psi service pressure, Inlet 3/4" NPSM
10111	RH Tank Valve with DIN/K outlet, 200/232 BAR For 2400 psi service pressure, Inlet 3/4" NPSM
10112	RH Tank Valve with DIN/K outlet, 200/232 BAR For 3000 psi service pressure. Inlet 3/4" NPSM
10113	RH Tank Valve with DIN outlet, 300 BAR For 3180/3442 psi service pressure, inlet 3/4" NPSM
10120	RH Tank Valve with DIN/K outlet, 200/232 BAR For 3442 psi service pressure. Inlet 3/4" NPSM
10301	RH "K" Valve for Aluminum Cylinders, For 3000 psi service pressure, inlet 3/4" NPSM

10111, 10112, 10120

10107, 10108

10113

NEW 10301 "K" Valve
(Supplied on all Aluminum cylinders)



Manifold - Modular Valves

Part #	Description
10164	Left Manifold Valve, DIN/K outlet, 200/232 bar Inlet 3/4" NPSM, for 2400 psi service pressure
10166	Left Manifold Valve, DIN/K outlet, 200/232 bar Inlet 3/4" NPSM, for 3442 psi service pressure
10163	Right Manifold Valve, DIN/K outlet, 200/232 bar Inlet 3/4" NPSM, for 2400 psi service pressure
10165	Right Manifold Valve, DIN/K outlet, 200/232 bar Inlet 3/4" NPSM, for 3442 psi service pressure
10161	Right Manifold Valve, DIN outlet, 300 bar Inlet 3/4" NPSM, for 3180/3442 psi service pressure
10162	Left Manifold Valve, DIN outlet, 300 bar Inlet 3/4" NPSM, for 3180/3442 psi service pressure

10162, 10164, 10166

10161, 10163, 10165





SCUBA MANIFOLD VALVES AND PARTS

Standard Manifold Kit Assemblies

Part #	Description
*200-95MK	Manifold Kit for 2400 PSI Service Pressure (Includes R and LH DIN/K Valve and 10095 Barrel Tee)
*232-95MK	Manifold Kit for 3442 PSI Service Pressure (Includes R and LH DIN/K Valve and 10095 Barrel Tee)
*300-95MK	Manifold Kit for 3180/3442 PSI Service Pressure (Includes R and LH DIN Valve and 10095 Barrel Tee)
10095	Rotating Isolation Tee, 3 o-rings per side, 215 MM

NOTE: Manifold and Isolation Tee valves use the same replacement parts as standard cylinder valves.
 * The DO2085 5.5" Bands were designed to be used with the -95MK Manifolds!



Manifold Parts

Part #	Description
1157	Right Hand Locking Nut for Isolation Tee
1158	Left Hand Locking Nut for Isolation Tee
1998	RH Seal Plug for 10162, 10164, 10166
1999	LH Seal Plug for 10161, 10163, 10165
P110V-OR	Seal O-Ring for Isolation Tee (Viton) (3 O-Rings Required Per Side)
P1035	Black Handwheel for Isolation Tee (Short)

- Blue Steel valves are made of rugged brass with chrome or matte finish for maximum protection, durability, and beauty.
- Manufactured with oxygen-compatible materials and lubricants.
- Sturdy black extended rubber handwheel allows easy access and grip to open and close valve.
- Recessed safety to protect against damage while diving or transporting cylinder.



H VALVES & KITS

Individual "H" Valves (Nitrox Ready)

Individual H Valve

Part #	Description
10081	Left Hand "H" Valve DIN/Yoke 200/232 Bar
10082	Right Hand "H" Valve DIN/Yoke 200/232 Bar

"H" Valve Kits (Nitrox Ready)

Part #	Description
16381	H valve Kit with RH Modular Valve, 4000 PSI Safety Kit Items: 10081 LH H Valve DIN/Yoke 10163 RH Modular Valve
16482	H valve Kit with LH Modular Valve, 4000 PSI Safety Kit Items: 10082 RH H Valve DIN/Yoke 10164 LH Modular Valve 3/4"
16581	H Valve Kit with RH Modular Valve, 5250 PSI Safety Kit Items: 10081 LH H Valve DIN/Yoke 10165 RH Modular Valve 3/4"
16682	H Valve Kit with LH Modular Valve, 5250 PSI Safety Kit Items: 10082 RH H Valve DIN/Yoke 10166 LH Modular Valve 3/4"

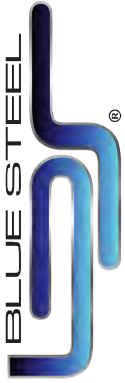
Optional Seal Plug for Modular Valve (When Purchased with Kit below)

Part #	Description
1998	RH Seal Plug for 10162, 10164, 10166
1999	LH Seal Plug for 10161, 10163, 10165

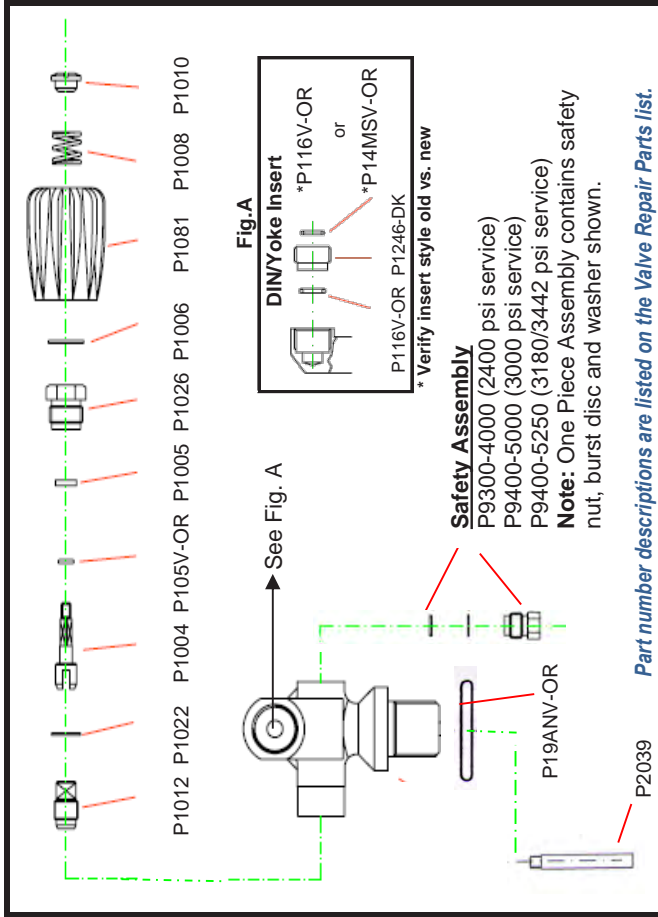


(Kit 16682 Shown)

NOTE: BLUE STEEL "H" Valves SHOULD ONLY BE USED WITH BLUE STEEL MODULAR VALVES. USE OF BLUE STEEL "H" VALVES WITH OTHER MANUFACTURER'S VALVES IS NOT RECOMMENDED AND WILL VOID ANY WARRANTY IMPLIED OR OFFERED.

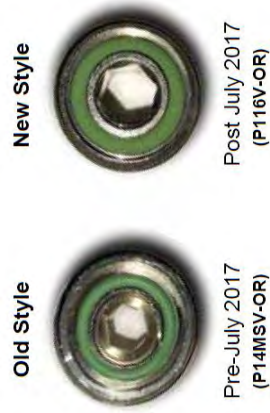


VALVE REPAIR PARTS VIEW



For Valve Models: 10081, 10082, 10107, 10108, 10110, 10111, 10112, 10120, 10301, 10113 (DIN Only - No Insert) and 18040 Inline Valve.

Torque Values: Packing Nut 29-30 Ft Lbs Maximum
 Safety Assembly 11 Ft Lbs Maximum
 DIN/Yoke Insert 15 Ft Lbs Maximum



Valve maintenance should only be performed by qualified personnel. **NOTE: Only Oxygen-compatible lubricant should be used when replacing parts.**

Only Blue Steel Scuba OEM parts should be used in repairing or refurbishing of Blue Steel Scuba valves. The use of other manufacturers valve parts in Blue Steel Scuba valves is not recommended and may result in failure of valve to operate properly and will void any warranty implied or offered.

Part #	Description (Standard Box Qty)
P1004	Stem (25)
P1005	Packing (25)
P1006	Handwheel Washer (25)
P1008	Handwheel Spring (25)
P1010	Handwheel Nut (25)
P1012	Seat Assembly (25)
P1022	Packing Nut Washer (25)
P1026	Packing Nut Plated (Bonnet) (10)
P2039	Dip Tube, Plated (10)
P1035	Handwheel, Black, Short (10)
P1037	Handwheel, Green, Short (Oxy.) (10)
P1081	Handwheel, Black, Long (10)
P1082	Handwheel, Green, Long (10)
P1246-DK	DIN/K Outlet Adaptor (10)
P1299	Black Bump Cap for Inline Valve (10)
O-RINGS	
P105V-OR	Stem (Viton) (25)
P19ANV-OR	Valve Inlet (Viton) (25)
P116V-OR	Outlet Adaptor (Viton) (25) Size 112
P14MSV-OR	K Outlet Face (Viton) (25) Size 014
SAFETY ASSEMBLIES (Burst Disc)	
P9300-4000	4000 PSI for 2400 PSI (10)
P9400-5000	5000 PSI for 3000 PSI (10)
P9400-5250	5250 PSI for 3180/3442 PSI (10)

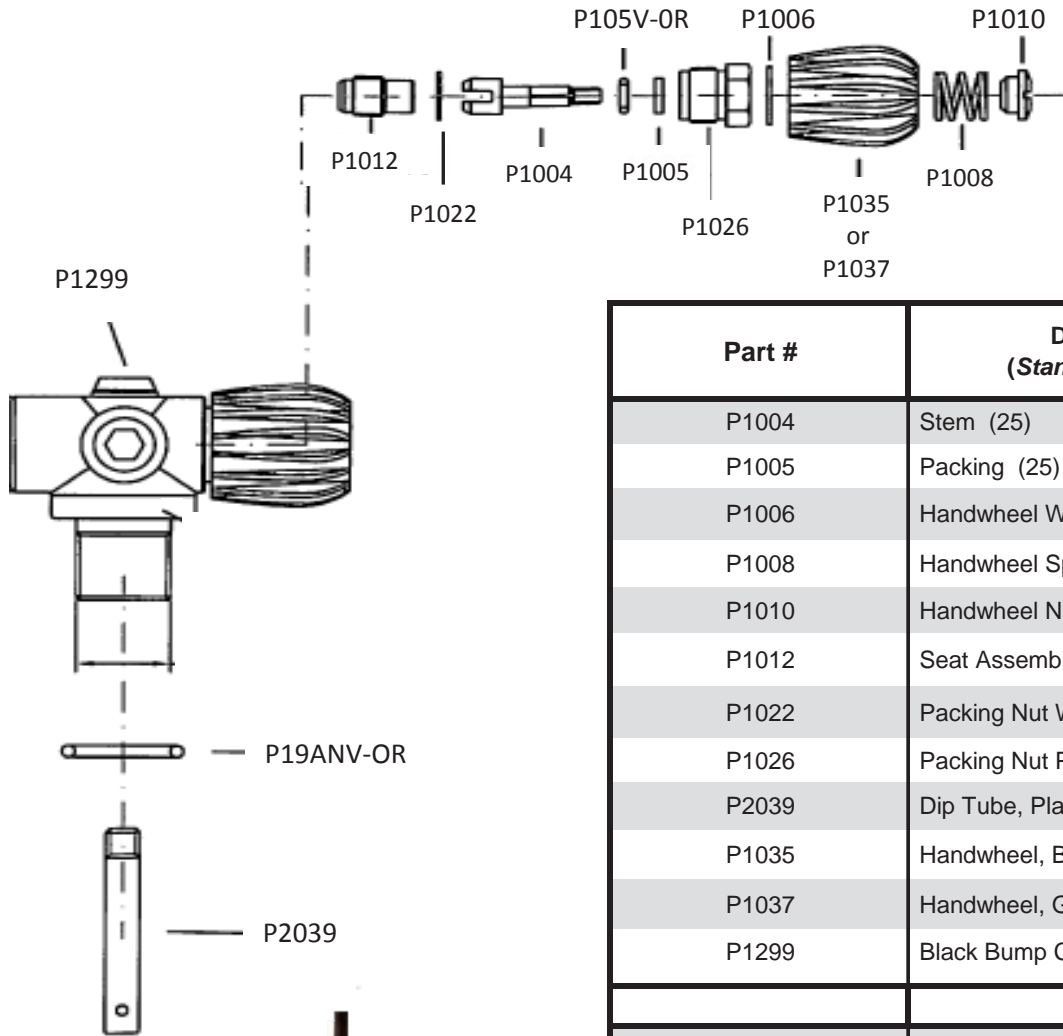
Manufacture Insert Update

(See figure "A")

In mid 2017 the Blue Steel valve manufacturer updated the insert (P1246-DK) on the DIN/YOKE valves. As a result of this change it will be necessary to identify the correct insert you have when ordering / replacing yoke face seal o-ring. The old style uses the P14MSV-OR and the new style utilizes the P116V-OR on the face. With any manufacturing transition there can be a brief overlap of styles during the transition period. We recommend you verify the insert you have if you purchased your cylinder valve in the July/August 2017 time frame.



INLINE REBREATHER VALVE



Part #	Description (Standard Box Qty)
P1004	Stem (25)
P1005	Packing (25)
P1006	Handwheel Washer (25)
P1008	Handwheel Spring (25)
P1010	Handwheel Nut (25)
P1012	Seat Assembly (25)
P1022	Packing Nut Washer (25)
P1026	Packing Nut Plated (Bonnet) (10)
P2039	Dip Tube, Plated with hex (10)
P1035	Handwheel, Black, Short (10)
P1037	Handwheel, Green, Short (Oxy.) (10)
P1299	Black Bump Cap for Inline Valve (10)
O-RINGS	
P105V-OR	Stem (Viton) (25)
P19ANV-OR	Valve Inlet (Viton) (25)





Blue Steel Scuba Lead Shot Soft Weight's

FEATURES



- Labels Marked for easy Identification
- Heavy-Duty nylon mesh double stitched bags
- #5 Round Lead Shot
- Full Case and partial Quantities Available
- 100% Lead no Graphite
- Combine weight with cylinders for freight!

Part #	Size	Description	Bag Color	Case Qty.	Case Wt.
LWS-1	1 lb.	1 Lb. Shot Wt. Single	Black	30	30 Lbs.
LWS-1-30		1 Lb. Shot Wt. Case of 30			
LWS-2	2 lb.	2 Lb. Shot Wt. Single	Green	17	34 Lbs.
LWS-2-17		2 Lb. Shot Wt. Case of 17			
LWS-3	3 lb.	3 Lb. Shot Wt. Single	Black	11	33 Lbs.
LWS-3-11		3 Lb. Shot Wt. Case of 11			
LWS-4	4 lb.	4 Lb. Shot Wt. Single	Royal	8	32 Lbs.
LWS-4-8		4 Lb. Shot Wt. Case of 8			
LWS-5	5 lb.	5 Lb. Shot Wt. Single	Red	7	35 Lbs.
LWS-5-7		5 Lb. Shot Wt. Case of 7			
LWS-6	6 lb.	6 Lb. Shot Wt. Single	Black	6	36 Lbs.
LWS-6-6		6 Lb. Shot Wt. Case of 6			
LWS-8	8 lb.	8 Lb. Shot Wt. Single	Black	4	32 Lbs.
LWS-8-4		8 Lb. Shot Wt. Case of 4			
LWS-10	10 lb.	10 Lb. Shot Wt. Single	Black	3	30 Lbs.
LWS-10-3		10 Lb. Shot Wt. Case of 3			



Blue Steel Scuba Lace & Hip Hard Weight's

Features

- Lace and Hip style Uncoated
- Weights Marked for easy Identification
- Ideal for use in weight-integrated BC's
- Use with nylon or rubber belts.
- Full Case and partial Quantities Available
- 100% Lead, no Graphite



(1 - 5 Lb.)



(6 - 10 Lb.)

Part #	Size	Description	Case Qty	Case Wt.
HWL-1	1 lb.	1 Lb. Single Hard Weight Lace-Thru	30	30 Lbs.
HWL-1-30		1 Lb. Lace-Thru Wt. Case of 30 HWL-1		
HWL-2	2 lb.	2 Lb. Single Hard Weight Lace-Thru	17	34 Lbs.
HWL-2-17		2 Lb. Lace-Thru Wt. Case of 17 HWL-2		
HWL-3	3 lb.	3 Lb. Single Hard Weight Lace-Thru	11	33 Lbs.
HWL-3-11		3 Lb. Lace-Thru Wt. Case of 11 HWL-3		
HWL-4	4 lb.	4 Lb. Single Hard Weight Lace-Thru	8	32 Lbs.
HWL-4-8		4 Lb. Lace-Thru Wt. Case of 8 HWL-4		
HWL-5	5 lb.	5 Lb. Single Hard Weight Lace-Thru	7	35 Lbs.
HWL-5-7		5 Lb. Lace-Thru Wt. Case of 7 HWL-5		
HWHL-6	6 lb.	6 Lb. Single Hard Weight Hip Style Lace-Thru	6	36 Lbs.
HWHL-6-6		6 Lb. Lace-Thru Hip Style, Case of 6 HWHL-6		
HWHL-8	8 lb.	8 Lb. Single Hard Weight Hip Style Lace-Thru	4	32 Lbs.
HWHL-8-4		8 Lb. Lace-Thru Hip Style, Case of 4 HWHL-8		
HWHL-10	10 lb.	10 Lb. Single Hard Weight Hip Style Lace-Thru	3	30 Lbs.
HWHL-10-3		10 Lb. Lace-Thru Hip Style. Case of 3 HWHL-10		



Tank Boots and Band Kits



Self-draining flexible PVC boot is easy to assemble to tank and provides a streamline profile for tank racks or doubling

Sizes and Part Number

Part Number	Size	Fits Cylinder Model
TB55	5.5"	L50, FX40
TB69	6.7 - 6.9"	M71, FX71 (Tanks no longer manufact
TB70	7 - 7.24"	L85, FX80, FX100, FX120
TB80	8"	L95, L108, FX117, FX133, FX149

Bands are made from a durable 304 stainless steel material with a high quality #4 finish and are complete with a bolt kit and will fit Blue Steel cylinders with manifolds. (All bands supplied with 18-8 SS bolt kits)



Sizes and Part Numbers

Part Number	Size	Band Width	Bolt Kit
*DO2085	5.5"	2 1/4"	Yes
DO2087	7" & 7-1/4"	2.5"	Yes
DO2089	8"	2.5"	Yes

* Use the -95MK Style Manifolds with Blue Steel 5.5" Band Sets.

Two bands with appropriate hardware are included in each kit for double tank set up.

NOTE: *It is recommended that on your regular inspection schedule of tank (no less than once annually), boots and bands should be removed for proper visual inspection of tank surface.*

Catalina Aluminum Scuba Cylinders

Item #	CF	Diameter	Fill Pressure-PSI
CA80XXDV	80	7.25	3000
CA63XXDV	63	7.25	3000
CA53XXDV *	53	7.25	3000
CA40XXDV *	40	5.25	3000
CA30XXDV *	30	5.25	3000
CA19XXDV *	19	4.38	3000
CA13XXDV *	13	4.38	3000
CA6XXDV *	6	3.21	3000

Cylinders and Valves "EA" Ready



XX = Color BK - Black ER - Electric Red YL - Florescent Yellow
 WH - White EB - Electric Blue GR - Florescent Green
 EP - Electric Purple PK - Florescent Pink

Unfinished: BR - Brushed (No Coat)

***NOTE:**

- 63 CF Available in Flo. Yellow, E. Red, Brushed, E. Blue, Shot Blast, Flo. Pink and Black
- 53 CF Available in Brushed only
- 40 CF Available in Flo. Yellow, Black, and Brushed
- 30, 19, 13, 6 CF Available in Flo. Yellow, Brushed and Black

For additional information please refer to Catalina detailed specification sheet in catalog

From time to time various sizes and colors may not sell as fast due to market demand, as a result stock can become older. We consider any Hydro 14 Months or less to be current and not subject to discounts.

No matter the size of your cascade system, 6, 10, 24 or more, Kaplan has the cylinders to meet your needs. Made by Faber in Italy, the same manufacturer of the well-known Blue Steel Scuba cylinders, Kaplan offers the highest quality ISO Industrial cylinders in the market today. ISO cylinders meet global cylinder specifications and have a 10-year hydro test cycle. Cylinders are supplied with a rugged CGA 347 or 702 valve for air service with the 25E metric thread.

Call your local Blue Steel sales representative and let us help you increase your cascade system capacity or replace worn cylinders.



High Quality ISO Industrial Cylinders for your Cascade Filling Systems



Part Nr.	Working Pressure	Test Pressure	*Dia.	*Length	W/C	CF AIR	Weight Lb.
UN/ISO4500	4500 PSI	6743 PSI	9 5/16"	51"	2750	434	150
UN/ISO6000	6000 PSI	9005 PSI	9 5/16"	52"	2642	507	202

*Nominal Dimensions

Kaplan Industries, Inc
6255 Kilby Road, Harrison, OH 45030



M-E



M-D

**Contact your Local Sales
Representative or Kaplan Scuba
at 877-434-8325**



Medical O₂ Cylinders for Emergency Kits

Description and Pricing

M-D : Aluminum Medical D
3ALM 2015 PSI Cylinder with
CGA 870 Wrench Operated
Post Valve.

(15 CF, 2.9 Liter, Length 16.7" Dia. 4.38")

M-E : Aluminum Medical E
3ALM 2015 PSI Cylinder with
CGA 870 Wrench Operated
Post Valve.

(24 CF, 4.6 Liter, Length 25.4" Dia. 4.38")

*Toggle for stem on post valve
Is available.*

Inquire Regarding Pricing and Inventory

Kaplan Scuba - 6255 Kilby Road, Harrison OH 45030
www.kaplanscuba.com

SCUBA SALES REPRESENTATIVES AND DISTRIBUTORS

AQUATIC SALES

*Alabama, DC, Delaware, Florida, Georgia,
Maryland, Mississippi, North & South
Carolina, Tennessee, Kentucky,
Virginia, West Virginia, Caribbean*

Ph: (678) 773-2820

Email: joey@aquatic-sales.com

SHAWN HARRISON

*Illinois, Indiana, Iowa, Kansas
Michigan, Minnesota, Missouri
Nebraska, N & S Dakota
Ohio, Wisconsin, Wyoming*

Cell: (630) 569-1626

Email: sharrison.harrison87@gmail.com

DIVERSCO/SHERWOOD SCUBA

*Arizona, Arkansas, California, Colorado
Hawaii, Idaho, Louisiana, Montana,
Nevada, New Mexico, Oklahoma, Oregon
Texas, Utah, Washington*

Ph: (800) 774-4447

Email: service@sherwoodscuba.com

JENNIFER MILLER

*Connecticut, Maine, Massachusetts
New Hampshire, New Jersey, New York
Pennsylvania, Rhode Island, Vermont*

Cell: (770)-861-3455

Email: jennifermiller245@gmail.com

DIVERSCO SUPPLY, INC. (Cambridge, Ontario Canada)

Ph: (800) 650-0061

Fax: (519) 740-9051

Email: spall@diverscosupply.com

BLUE STEEL OFFICE & WAREHOUSE

6255 Kilby Road
Harrison, OH 45030

Toll Free: 877-434-8325

Fax: 513-367-0803

Sales: rachel@kaplanindustries.com

